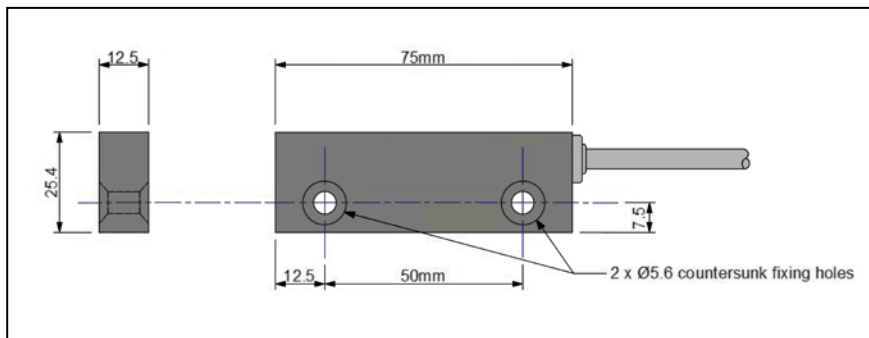


TWF Heavy duty reed switch and magnet – for harsh environments

- Robust aluminium housing (anodised black); highly corrosion resistant
- Reed switch shock prevention system
- Large choice of reed switch, cable and magnet options
- IP67 protection rating, suitable for use outdoors
- Temperature range -20°C to +80°C



Made in the UK



Switch and magnet housing options:

- Countersunk or non-countersunk
- Standard anodised finish or special 1000hr salt-spray rated finish
- Optional earth wire

Reed switch options:

Option	Contact type	Contact material	Max. voltage (ac/dc)	Max. current	Max. power	Sensing distance with M1*	Sensing distance with M2*
A	Changeover (SPDT)	Rhodium	180	0.5A	10W/VA	50mm	35mm
B	Changeover (SPDT)	Rhodium	300	0.5A	30W/VA	35mm	20mm
C	Changeover (SPDT)	Tungsten	300	3A	3W/VA min.-100W/VA max.	35mm	20mm
D	Normally open (SPST)	Rhodium	120	0.5A	10W	60mm	45mm
E	Normally open (SPST)	Rhodium	240	1A	50W	50mm	35mm
F	Normally open (SPST)	Rhodium	300	3A	100W/VA	30mm	20mm

* Please note that the sensing distance will be reduced by the presence of ferromagnetic materials such as steel.

Cable options:

Any cable length is available
Cable specification: 2 or 3 cores 0.5mm² (16x0.2mm) with black PVC sheath (Ø5.3mm)

Magnet options (others are available, please enquire):

M1 – High strength magnet
M2 – Medium strength magnet

Please contact us for prices and advice on which reed switch and magnet would best suit your application